



# GMT MONTHLY MEMBERSHIP PROGRESS REPORT

Results as of: 6/30/2024

Multiple District 17

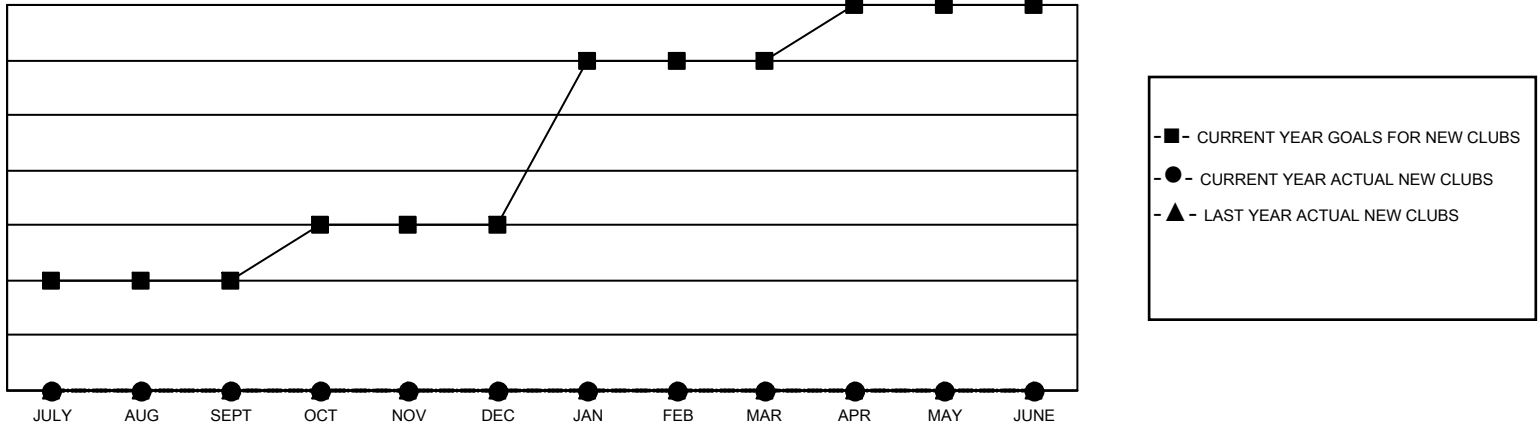
LOCATION: KANSAS

GMT: OPEN

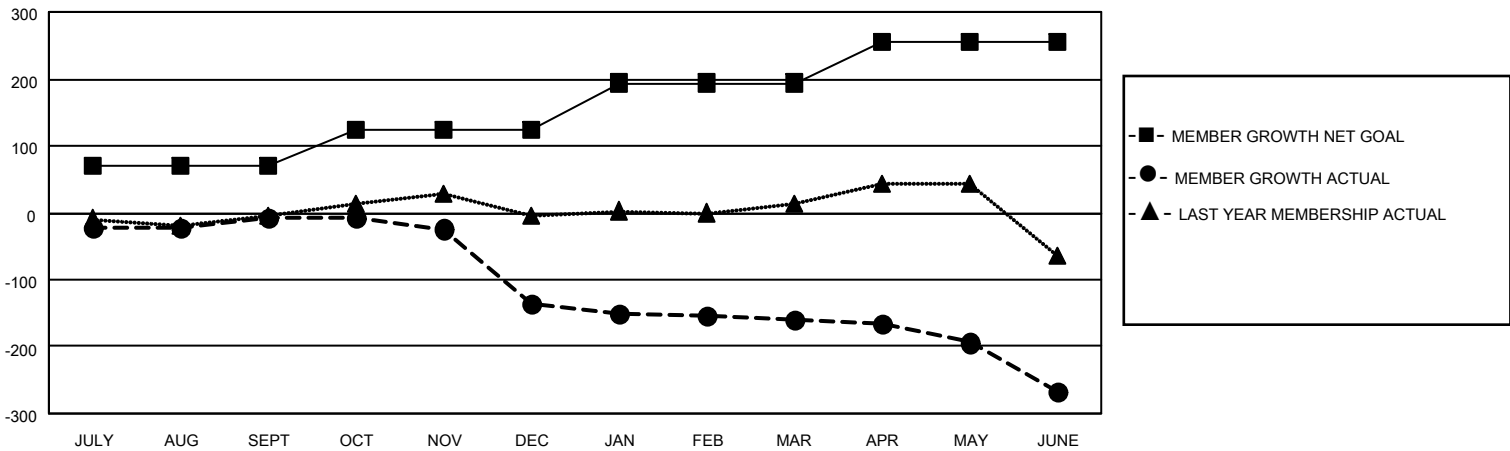
GMT CA 1

Clubs				Members			
RESULTS FOR 2023-2024				RESULTS FOR 2023-2024			
QUARTER	NEW CLUB GOAL	NEW CLUBS	DROPPED CLUBS	QUARTER	MEMBER GROWTH NET GOAL	MEMBER GROWTH ACTUAL	DROPPED MEMBERS ACTUAL (including transfers)
JULY/AUG/SEPT	2	0	2	JULY/AUG/SEPT	71	86	87
OCT/NOV/DEC	1	0	2	OCT/NOV/DEC	52	65	190
JAN/FEB/MAR	3	0	0	JAN/FEB/MAR	71	97	103
APR/MAY/JUNE	1	0	2	APR/MAY/JUNE	60	91	186

**GOALS AND ACTUAL NEW CLUBS CUMULATIVE**



**GOALS AND ACTUAL MEMBERS CUMULATIVE**



<b>DROPPED CLUBS: 6</b>	107 CLUBS OF 208 ADDED 1 OR MORE NEW MEMBERS	<b>GENDER DISTRIBUTION</b> MALE 2,627 (66.57%) FEMALE 1,319 (33.43%)
<b>DROPPED MEMBERS</b> DECEASED 65 CLUB CANCELLED 18 OTHER 482 <b>TOTAL 565</b>	<a href="#">CLICK HERE FOR CUMULATIVE MEMBERSHIP DATA</a>	TOTAL FAMILY UNIT MEMBERS 855 FAMILY MEMBERS PAYING HALF DUES 439